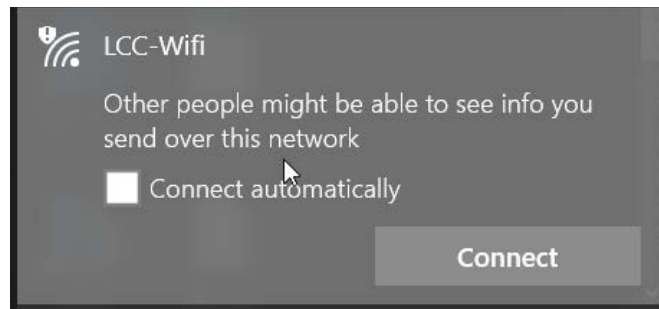





# Laredo College

## Student Guide for connecting a Windows device to the LCC-WiFi wireless network.

1. Connect your Windows device to the LCC-WiFi SSID.



2. Open your browser and it should automatically redirect you to the Guest Portal login. Otherwise, type Laredo.edu in the address bar to force the redirect. Enter your Username and Password. **(These are your PASSPORT credentials)**. Please select "I agree to the terms and conditions" and click [Sign on](#).



### LCC Guest Portal

**Sign On**

Welcome to the LCC Guest Portal. Sign on with the username and password provided to you.

**Username:**

**Password:**

[Change Password](#)

**Laredo Community College - WiFi Access**

**Terms and Conditions of Laredo Community College Wireless Internet Access.**

The student or guest assumes all the responsibility for the use of the Laredo Community College Wireless Internet access service (Wi-Fi). Users of this service must ensure that their laptop or wireless device contain proper anti-virus and/or security software protection. Laredo Community College will not be held liable or responsible if your laptop or wireless device becomes infected with viruses and/or spyware or any damages that may occur to your device as a result of using this service. This wireless access is provided for your own convenience.

**WARNING: any data transmitted/received using this**

[I agree to the terms and conditions](#)

[Sign On](#)

3. Click START on the BYOD Portal screen.

**LCC BYOD Portal**

1 2 3

**BYOD Welcome**  
Welcome to the BYOD portal.

Access to this network requires your device to be configured for enhanced security. Click **Start** to provide device information before components are installed on your device.

**Terms and Conditions of Laredo Community College Wireless Internet Access.**

The student or guest assumes all the responsibility for the use of the Laredo Community College Wireless Internet access service (Wi-Fi). Users of this service must ensure that their laptop or wireless device contain proper anti-virus and/or security software protection. Laredo Community College will not be held liable or responsible if your laptop or wireless device becomes infected with viruses and/or spyware or any damages that may occur to your device as a result of using this service. This wireless access is provided for your own convenience. **WARNING: any data transmitted/received using this service is not secure; others could intercept any data transmitted or received.**

By authenticating with your user name and password you are agreeing to abide by these terms and conditions as stated above and the College Internet Usage Policy. Any user violating these provisions is subject to loss of access privileges and any other disciplinary actions.

**Start**

4. Fill in the Device name and enter a brief description (Optional).

**LCC BYOD Portal**

1 2 3

**Device Information**

Enter the device name and optional description for this device so you can manage it using the My Devices Portal.

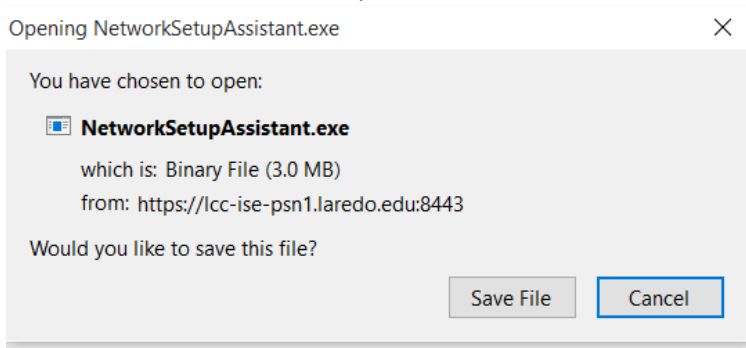
**Device name: \***

**Description:**

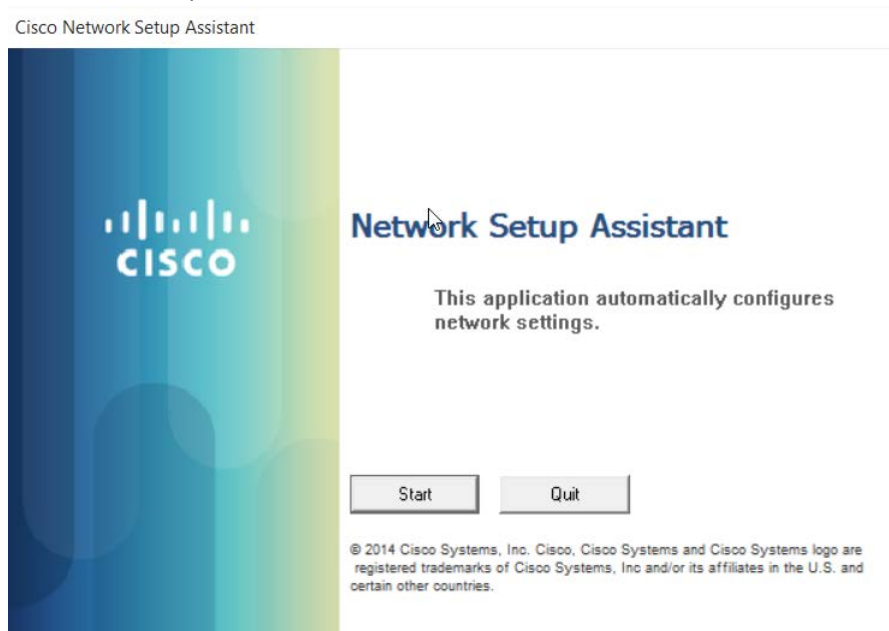
**Device ID:** 5C:51:4F:11:72:FE

**Continue** ➔

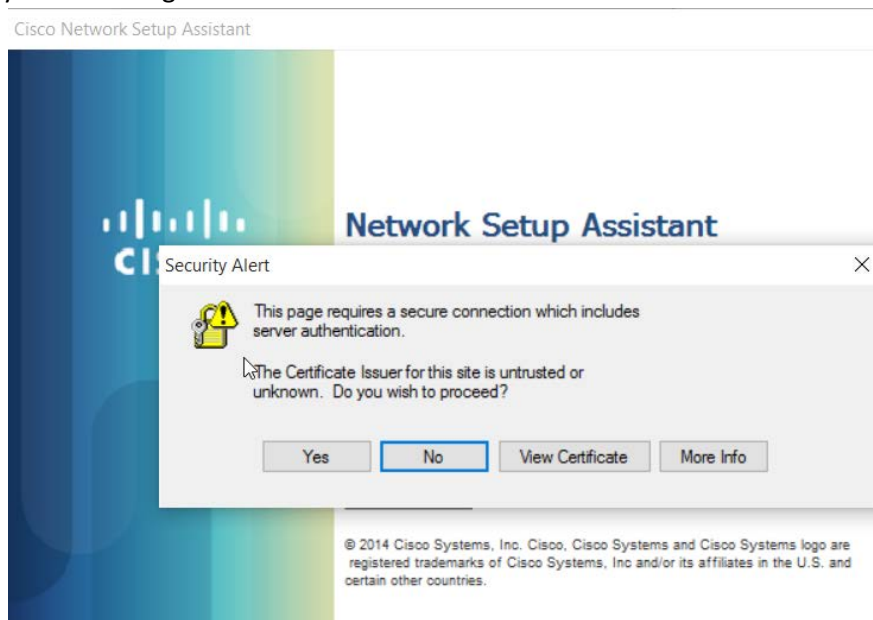
5. Save or Run the Network Setup Assistant.



6. Click Start to launch the Network Setup Assistant.



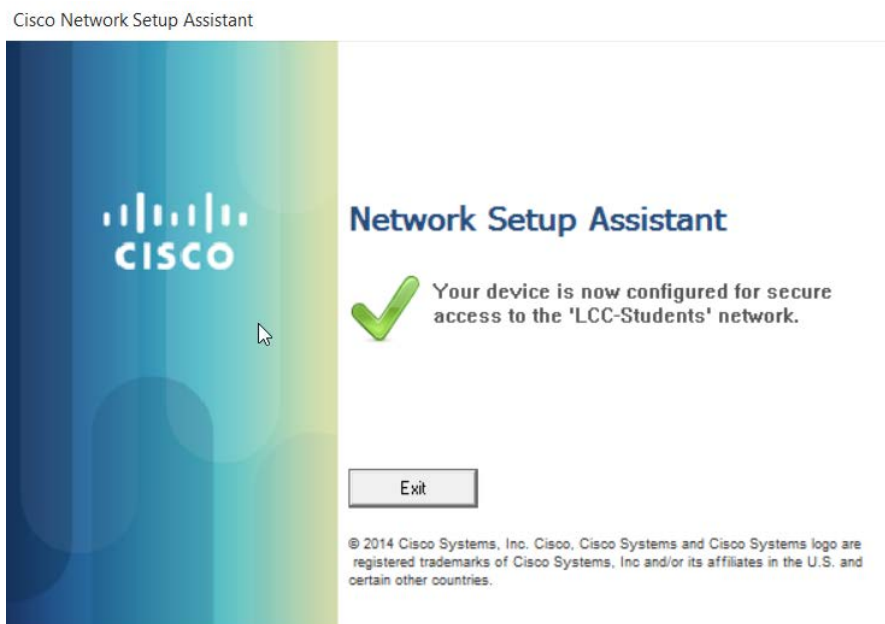
7. Click yes on the Security Alert message.



8. Click yes on the Security Warning to install the certificate.

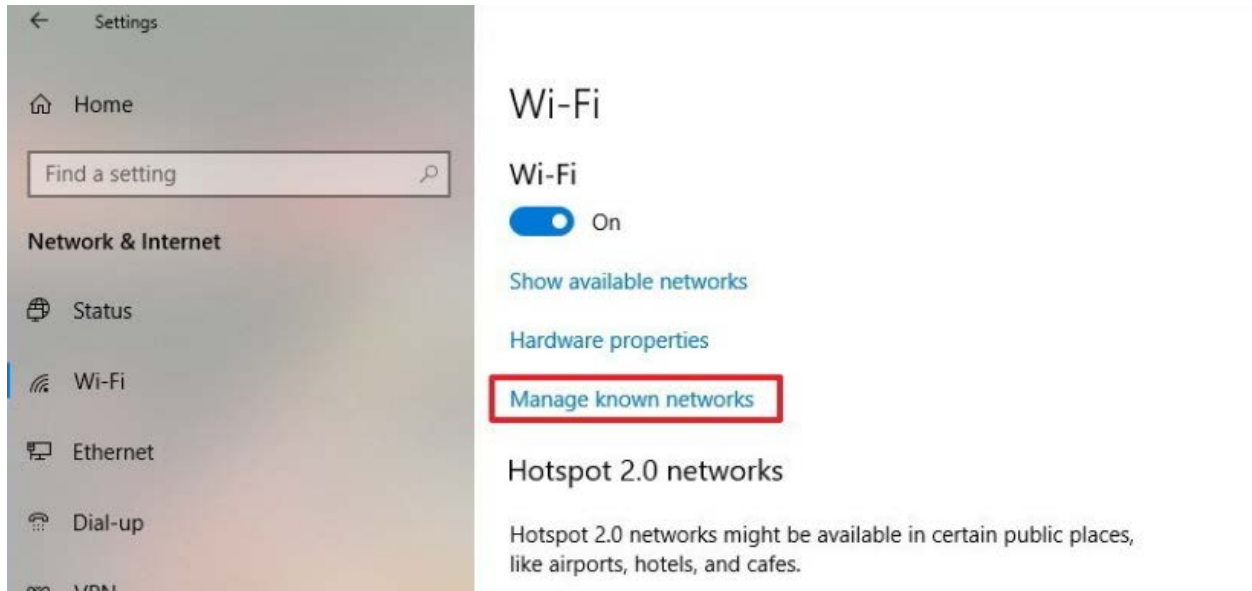


9. Your device should now be connected to the **LCC-Students** wireless network. Click the Exit button.



10. **IMPORTANT:**

To stay on the **LCC-Students**, you must **go into the settings and “Manage Known Networks”**. Find the **LCC-WIFI** connection and Select **“Forget Network”**. Otherwise, your device may connect automatically to LCC-Wifi and will ask you to go through the whole process again.



**Below is another example of how WINDOWS 10 screen may look like**

**Click “FORGET” ON “LCC-WIFI”**

